

**SWAN LAKE FIRST NATION – MATRIX SOLUTIONS  
INC. PARTNERSHIP**

**INDIGENOUS CONSTRUCTION MONITORING**

**WEEKLY REPORT**

**SPREAD 7**

**OCTOBER 22<sup>ND</sup> TO OCTOBER 27<sup>TH</sup>**

## 1. PURPOSE OF THIS REPORT

The report is a weekly summary of the daily reports submitted by the Indigenous Construction Monitors that are working on spread seven. The social and cultural findings have been tabulated with locations and mitigation measures below. A summary of the construction activities has been summarized for the weeks of October 22<sup>nd</sup> to October 27<sup>th</sup>, 2018.

### Social and Cultural Features

Field Observation	# of occurrences	Description and Mitigation Measures	Mitigation Status	Further Action Required (Yes/No)
Traditional Use Area (hunting, fishing, gathering, trapping)	4	1 Heritage Resource TLU-68 Stringing crew working through area. 3 Heritage Resource sites. -HER-156 SSKP 842+240 Pipe Gang in area. -HER-157 SSKP 842+570 Pipe Gang in area. -HER-158 SSKP 842+930 Pipe Gang in area.		
Rock Formations (rocks of significance, tipi rings, etc.)	N/A			
Artifacts	N/A			
Bones	N/A			
Potential Gravesites	N/A			

### Environmental Features

Field Observation	# of occurrences	Description and Mitigation Measures	Mitigation Status	Further Action Required (Yes/No)
Medicinal or Cultural Plants	N/A			
Aquatic Life	N/A			

Animal Observations or Burrows	N/A			
Bird Nests	N/A			
Trees (Red Willow)	N/A			
Wetlands	27	<p>MB-1039-5. WETLANDS SEMI MARSH COMPLEX CLASS 4 "</p> <p>MB-078 Ephemeral/Temporary Marsh class 1 &amp; 2 SSKP 853+700 Coating Mainline</p> <p>-MB-079 Seasonal Marsh Class 3 SSKP 853+940 Coating mainline</p> <p>-MB-080 Seasonal Marsh Class 3 Wetland Complex SSKP 854+260 Coating Mainline</p> <p>-MB-099 Semi-Permanent Marsh Class 4 SSKP 876+710 Pipe Gang</p> <p>-MB-100 Seasonal Marsh Class 3 SSKP 877+670 Pipe Gang</p> <p>MB-101 Seasonal Marsh Class 3 SSKP 880+300 Pipe gang welding in area.</p> <p>-MB-102 Ephemeral/Temporary Marsh Class 1 &amp; 2 SSKP 881+520 Pipe Gang welding in area.</p> <p>-MB-127 Ephemeral/Temporary Marsh Class 1 &amp; 2 SSKP 895+520 Stringing crew stringing pipe in area.</p> <p>-MB-129 Seasonal Marsh Class</p>		

		<p>3 Wetland Complex SSKP 903+030 Grade crew stripping topsoil around area. MB-1039 Semi-Permanent Marsh Class 4 Wetland Complex SSKP 818+400 Tie In crew welding in wetlands. -MB-058 Ephemeral/Temporary Marsh Class 1 &amp; 2 SSKP 842+140 Buffer Mulch crew in area spraying buffer. -MB-059 Ephemeral/Temporary Marsh Class 1 &amp; 2 SSKP 842+470 Buffer Mulch crew in area spraying buffer. -MB-60 Broad-Leaf Treed Swamp Wetland Complex SSKP 843+110 Buffer Mulch crew in area spraying buffer. -MB-061 Broad-Leaf Treed Swamp Wetland Complex 843+340 Buffer Mulch crew in area spraying buffer. -MB-062 Ephemeral/Temporary Marsh Class 1 &amp; 2 SSKP 843+550 Buffer Mulch crew in area spraying buffer. -MB-063 Ephemeral/Temporary Marsh Class 1 &amp; 2 SSKP 843+750 Buffer Mulch crew in area spraying buffer.</p>		
--	--	--	--	--

		<p>-MB-103 Seasonal Marsh Class 3 SSKP 884+850 Pipe Gang in area.</p> <p>-MB-104 Seasonal Marsh Class 3 SSKP 885+250 Pipe Gang in area.</p> <p>-MB-105 Ephemeral/Temporary Marsh Class 1 &amp; 2 SSKP 885+530 Pipe Gang in area.</p> <p>-MB-106 Seasonal Marsh Class 3 SSKP 885+650 Pipe Gang in area.</p> <p>-MB-107 Seasonal Marsh Class 3 SSKP 885+890 Pipe Gang in area.</p> <p>-MB-109 Ephemeral/Temporary Marsh Class 1 &amp; 2 SSKP 886+060 Pipe Gang in area.</p> <p>ID # MB-040. Seasonal marsh complex no activity.</p> <p>MB-054 complex marsh no activity</p> <p>MB-043 Ephemeral/Temporary Marsh Class 1 &amp; 2 SSKP 833+150 Trenching, Lower In and Backfill crews in area.</p> <p>-MB-044 Ephemeral/Temporary Marsh Class 1 &amp; 2 SSKP 833+340 Trenching, Lower In and Backfill crews in area.</p> <p>-MB-090 Ephemeral/Temporary Marsh</p>		
--	--	---	--	--

		<p>Class 1 &amp; 2 SSKP 862+900 Coating mainline in area.</p> <p>-MB-091 Seasonal Marsh Class 3 Wetland Complex SSKP 863+460 Coating mainline in area.</p>		
Watercourse Crossing	2	<p>Watercourse Drainage MB-WC84 SSKP 902+530 Grade crew touching up and finishing ROW.</p> <p>-Watercourse Drainage MB-WC31 SSKP 903+090 Grade crew supporting workers installing wetland ramp.</p>		

### Additional Observations and Summary of Activities or Concerns

Weekly activity included attending daily tailgate meetings and continue to check access points on the ROW and monitor activities on Spread 7.

October 22, 2018 - Safety Included: Slips, trips, falls, pay attention to the terrain you are walking on. Watch for wildlife, be alert when driving. Proper PPE on the job site. Driving, pay attention to road conditions and signs. Vehicles, keep clean headlights, brake lights and windshield. Take garbage out after each shift. All injuries, incidents, and occupational illnesses can be prevented. All operating exposures can be controlled. All employees are responsible for safety. Safety is 24/7 and it benefits family, friends, co-workers and community. Be aware of students and children in Brandon area and gravel roads as school is in season. Dress in layers cold weather season here and drink plenty of water as dehydration can happen when cold out.

Muddy conditions and snow be aware of surroundings on foot and when driving. Also, high winds today be careful around crews for dust contamination/coating fumes/welders fumes and also when opening doors vehicles/office doors/bathroom doors.

**Weather Forecast/Environment:** Mainly sunny. Wind becoming northwest 20 km/h gusting to 40 in the morning. High 8. UV index 2 or low. Keep all areas of work clean and gravel roads travelled as well. Minimize the number of environmental non-compliances. Provides Environmental Due diligence. Increase and strengthen the communication links between Contractors and Enbridge Construction and Environmental staff regarding environmental considerations and mitigation. Provide daily on the job awareness/education through assessment and communication of the environmental considerations and mitigation.

**General:** The morning meeting went good everyone had a good day off. The work on ROW has worked its way east on the project and we will be spending more time monitoring this side as we have mostly covered work on the west side. The crews have been making good progress. With the dry and warm weather conditions crews are moving at a good pace and getting good production. SSKP 853+900 Coating Mainline working through wetlands MB-078 Ephemeral/Temporary Marsh class 1 & 2 SSKP 853+700. MB-079 Seasonal Marsh Class 3 SSKP 853+940 and MB-080 Seasonal Marsh Class 3 Wetland Complex SSKP 854+260 SSKP 830+000 Backfill, Trenching and Tie In crews working within area lots of congestion give workers space and give right of way to operators. SSKP 877+500 Pipe gang in wetlands areas MB-099 Semi-Permanent Marsh Class 4 SSKP 876+710 and MB-100 Seasonal Marsh Class 3 SSKP 877+670. SSKP 879+750 Set-up and End Prep had to clean their equipment and are not very far ahead of welding crews. They are getting very good production and have a long straight stretch with no obstacles plus dry ROW conditions.

SF # 12 Excavators trenching the ditch so they can lay down the pipe. Topsoil is covered with geotech to put back on once the pipe is laid. SF # 23 West Ditch witch parked waiting to be moved to dry grounds. Oil jug on the ditch witch was not properly contained, spoke to the foreman and he addressed the issue right away. No oil or spills. No garbage or debris on the ground.

SF # 47 North end. Bevelling crew near the entrance KP- 878+400. Clean up crew following the 4 bevelling machines picking up the shavings. The foreman explained to us how the bevelling machine worked. No concerns."

Deficiencies

Rd #50 flagging sign down on west side of road crossing and on east side 100 km/h sign down.

Rd # 60 Truck turning and flagging sign knocked down to north of Rd # 60.

Truck turning sign damaged by Rd # 59 north.

Rd # 48 North flag sign down and south construction sign down.

Rd # 53 sign down on west side.



Rd # 37 crossing no stop sign on west side.

Rd # 21 South stop down on road crossing.

All reported to Enbridge.

**Work Forecast:** Continue to monitor work in sensitive areas and use Banister's daily work objectives to coordinate work.

October 23, 2018 - Safety included: Muddy sites, Slips, trips, falls. Wear the proper footwear. Watch out for pot holes, gopher holes, skids and garbage. Heavy equipment, keep eye contact with operator at all times. Wear proper PPE, Weather dress for the season not the day. Communication: let your co-workers know where you are going and when you will be back. All injuries, incidents, and occupational illnesses can be prevented. All operating exposures can be controlled. As a Senior Monitor I'm accountable for safety performance. All employees are responsible for safety. Safety is 24/7 and it benefits family, friends, co-workers and community.

Be aware of students and children in Brandon area and gravel roads as school is in season.

Dress in layers cold weather season here and drink plenty of water as dehydration can happen when cold out. Muddy conditions and snow be aware of surroundings on foot and when driving.

Also, high winds today be careful around crews for dust contamination/coating fumes/welders fumes and also when opening doors vehicles/office doors/bathroom doors.

**Weather forecast/Environment:** "High 10. UV index 2. Wind 15 km/h.

Wetland water crossing MB-WC-30 ID # Drainage, SSKP:901.97.

MB 129 wetlands seasonal marsh class 3."

Keep all areas of work clean and gravel roads travelled as well.

Minimize the number of environmental non-compliances.

Provides Environmental Due diligence.

Increase and strengthen the communication links between Contractors and Enbridge Construction and Environmental staff regarding environmental considerations and mitigation.

Provide daily on the job awareness/education through assessment and communication of the environmental considerations and mitigation.

General:

Our morning meeting involved safety issues. Talked about working around heavy equipment operators and giving them space. Also crews are getting close to finishing at the end of our project. So in the next few days will be making our way back to kick-off to monitor crews heading back.

SSKP 902+530 Grade crew stripping and pushing topsoil. Also doing finishing touches on ROW. Also they finished a wetland ramp for Watercourse Drainage MB-WC84 SSKP 902+530.

SSKP 903+090 Grade crew stripping and pushing topsoil. Also workers in area installing wetland ramp for Watercourse Drainage MB-WC31 SSKP 903+090. and Wetland MB-129 Seasonal Marsh Class 3 Wetland Complex SSKP 903+030.

SSKP 880+855 Pipe Gang welding pipe on wetlands in MB-101 Seasonal Marsh Class 3 SSKP 880+300 and MB-102 Ephemeral/Temporary Marsh Class 1 & 2 SSKP 881+520.

SSKP 895+700 Stringing crew stringing pipe through wetlands MB-127 Ephemeral/Temporary Marsh Class 1 & 2 SSKP 895+520 and Traditional Land Use area Heritage Resource TLU-68.

Also on my way into yard a Premay truck went by me fast on gravel road and chipped my windshield with rock. I went to the stockpile yard he came from and let the foreman know respectfully to tell the driver to slow down when passing vehicles. I know the locals wave when you drive by them slow because of rocks flying from driving fast can happen and it did.

" Our morning meeting involved safety issues. Talked about working around heavy equipment operators and giving them space. Also crews are getting close to finishing at the end of our project. So in the next few days will be making our way back to kick-off to monitor crews heading back.

SSKP 902+530 Grade crew stripping and pushing topsoil. Also doing finishing touches on ROW. Also they finished a wetland ramp for Watercourse Drainage MB-WC84 SSKP 902+530.

SSKP 903+090 Grade crew stripping and pushing topsoil. Also workers in area installing wetland ramp for Watercourse Drainage MB-WC31 SSKP 903+090. and Wetland MB-129 Seasonal Marsh Class 3 Wetland Complex SSKP 903+030.

SSKP 880+855 Pipe Gang welding pipe on wetlands in MB-101 Seasonal Marsh Class 3 SSKP 880+300 and MB-102 Ephemeral/Temporary Marsh Class 1 & 2 SSKP 881+520.

SSKP 895+700 Stringing crew stringing pipe through wetlands MB-127 Ephemeral/Temporary Marsh Class 1 & 2 SSKP 895+520 and Traditional Land Use area Heritage Resource TLU-68.

Also on my way into yard a Premay truck went by me fast on gravel road and chipped my windshield with rock. I went to the stockpile yard he came from and let the foreman know respectfully to tell the driver to slow down when passing vehicles. I know the locals wave when you drive by them slow because of rocks flying from driving fast can happen and it did.

SF # 1 Continuing dewatering 24 hours. Checked generator for oil, gas, diesel leaks. Walked the SF clean and organized. Hoses going to the pig pen east side of SF # 1. SF # 15 Congested. 4 side booms holding the pipe in slings than guiding it onto the bore pipe. Welders will than weld the tie-ins. SF # 23 East. 6 side booms, 3 excavators parked. 2 excavators trenching the open ditch. Ditch wheel stopped trenching workers say bad ground. Workers preheating the pipe to help it dry faster. SF # 29 walked down the SF. Checked for garbage, oil, gas, diesel leaks on the ground. No concerns. SF # 61. Walked to the wetlands crossing. No concerns. SF # 54 Coyote off the ROW at KP-891+400. No activity.

Work Forecast: Continue to monitor sensitive areas and coordinate with Banister's daily objectives list.

October 24, 2018 - Safety included: Slips, trips, falls, pay attention to the terrain you are walking on. Wildlife, be alert when driving. Proper PPE on the job site. Congested sites. Be aware of moving equipment. Keep eye contact with operator at all times. While driving, pay attention to road conditions and signs. Vehicles, keep clean headlights brake lights windshield. Take garbage out after each shift. All injuries, incidents, and occupational illnesses can be prevented. All operating exposures can be controlled. As a Senior Monitor I'm accountable for safety performance. All employees are responsible for safety. Safety is 24/7 and it benefits family, friends, co-workers and community. Be aware of students and children in Brandon area and gravel roads as school is in season. Dress in layers cold weather season here and drink plenty of water as dehydration can happen when cold out. Muddy conditions and snow be aware of surroundings on foot and when driving. Also, high winds today be careful around crews for dust contamination/coating fumes/welders fumes and also when opening doors vehicles/office doors/bathroom doors.

**Weather forecast/Environment:** Sunny. Becoming a mix of sun and cloud in the afternoon. High 13. UV index 2 or low.

Keep all areas of work clean and gravel roads travelled as well. Minimize the number of environmental non-compliances. Provides Environmental Due diligence. Increase and strengthen the communication links between Contractors and Enbridge Construction and Environmental staff regarding environmental considerations and mitigation. Provide daily on the job awareness/education through assessment and communication of the environmental considerations and mitigation.

General:

Our morning meeting a topic we discussed was speeding, yesterday a Premay truck on our job passed me and was speeding that resulted in a crack on my windshield. We've been doing a great job with slowing down and we will remain diligent. SSKP 821+000 Tie In coating blasting and applying epoxy coating to weld. Tie In crew setting up pipe and building bell hole for tie in. SSKP 818+400 Tie In crew welding section under hotline in wetlands MB-1039 Semi-Permanent Marsh Class 4 Wetland Complex. SSKP 843+200 Buffer Mulch crew spraying buffer working through wetlands MB-058 Ephemeral/Temporary Marsh Class 1 & 2 SSKP 842+140, MB-059 Ephemeral/Temporary Marsh Class 1 & 2 SSKP 842+470, MB-60 Broad-Leaf Treed

Swamp Wetland Complex SSKP 843+110, MB-061 Broad-Leaf Treed Swamp Wetland Complex 843+340, MB-062 Ephemeral/Temporary Marsh Class 1 & 2 SSKP 843+550, MB-063 Ephemeral/Temporary Marsh Class 1 & 2 SSKP 843+750. Also, in area Traditional Land Use area working through Heritage Resource sites HER-156 SSKP 842+240/HER-157 842+570/HER-158 SSKP 842+930. SSKP 885+700 Pipe Gang working through wetlands MB-103 Seasonal Marsh Class 3 SSKP 884+850, MB-104 Seasonal Marsh Class 3 SSKP 885+250, MB-105 Ephemeral/Temporary Marsh Class 1 & 2 SSKP 885+530, MB-106 Seasonal Marsh Class 3 SSKP 885+650, MB-107 Seasonal Marsh Class 3 SSKP 885+890 and MB-109 Ephemeral/Temporary Marsh Class 1 & 2 SSKP 886+060. SF # 9 Observed the tie-in welders welding the tie-ins. D-8 dozer will backfill once the welding is done. Walked the ROW checking for oil, gas, cigarette butts, garbage. No concerns. SF # 1 Checked the generators for oil or gas leaks. No concerns they had the proper spill kits. SF # 23 Congested. Dozers doing the backfill onto the pipes. Walked the SF checking for garbage, oil, diesel leaks. No concerns. SF # 63 Observed equipment being washed at the wash station. Very clean and organized. Work Forecast: Crews will be mobilizing to different areas on ROW. The wetland ramp at Rd # 28 to #27 will most likely start this week. The Grade crew will head back to bone yard after cleaning is done at Rd # 63 and they will start clean-up. We will monitor areas that are priority and areas that are sensitive tomorrow.

October 25, 2018 - Safety included: Communication let your supervisor know your whereabouts and what you are doing at all times. Remain focused on job at hand. Equipment- keep good eye contact with the operator. Lifting and handling lift with your knees not your back. All injuries, incidents, and occupational illnesses can be prevented. All operating exposures can be controlled. As a Senior Monitor I'm accountable for safety performance. All employees are responsible for safety. Safety is 24/7 and it benefits family, friends, co-workers and community. Be aware of students and children in Brandon area and gravel roads as school is in season. Dress in layers cold weather season here and drink plenty of water as dehydration can happen when cold out.

Muddy conditions and snow be aware of surroundings on foot and when driving. Also, high winds today be careful around crews for dust contamination/coating fumes/welders fumes and also when opening doors vehicles/office doors/bathroom doors.

Weather forecast/Environment: Mainly sunny. Increasing cloudiness in the afternoon. Wind becoming northeast 20 km/h early in afternoon. High 12. UV index 2 or low.

Keep all areas of work clean and gravel roads travelled as well.

Minimize the number of environmental non-compliances.

Provides Environmental Due diligence.

Increase and strengthen the communication links between Contractors and Enbridge Construction and Environmental staff regarding environmental considerations and mitigation.

Provide daily on the job awareness/education through assessment and communication of the environmental considerations and mitigation.

Wetlands : 4

Traditional Land Use : 1 Coating mainline working through Archeological site Heritage Resource area HER-160.

**General:**

SF # 21 Continuing with the dewatering. Checked generators and parked equipment for oil, gas diesel leaks or spills, cigarette butts. Pumps and generator in proper spill tray well contained. No issues.

SF # 22 Walked the SF Checked for wildlife, oil, gas ,cigarette butts, garbage. No concerns.

SF # 28 Walked the SF into the wetlands. No activity. Clean and organized.

SF # 52 Preheating crew at the entrance of SF# 52. Monitor welding crew working behind the preheating crew. Walked the SF

checking for debris, gas, oil spills. No concerns.

After morning meeting we planned our work scope and made our way out to our objectives. In the morning I went to monitor the Tackifier crew. They spray the topsoil pile to prevent it from blowing away. They had issues with the wrong product and were on standby when I arrived. So I will try again tomorrow as they should be ready to go.

The Access crew has begun preparations for ramping wetland between Rd # 27 and Rd # 28. They are mobilizing Argos and Snow Cats for tramping down cattails ( Bulrushes ). Also will be hauling in rig mats for the corridor crossing for borrow pit. Today they also did Hydro-vac the corridor lines after they were located and staked.

SSKP 833+125 Trenching, Lower In and Backfill crews working through wetlands MB-043 Ephemeral/Temporary Marsh Class 1 & 2 SSKP 833+150 and MB-044 Ephemeral/Temporary Marsh Class 1 & 2 SSKP 833+340.

SSKP 833+900 Tree broke and fell onto ROW most likely from high winds. Landed on topsoil and damaged Warning Water Body sign. Good thing it didn't fall while workers set up the sign, I let safety with Enbridge know location.

SSKP 863+400 Coating mainline working through Archeological site Heritage Resource area HER-160 and also 2 wetlands MB-090 Ephemeral/Temporary Marsh Class 1 & 2 SSKP 862+900 and MB-091 Seasonal Marsh Class 3 Wetland Complex SSKP 863+460.

SSKP 873+920 During my drives between sites I monitor I drive down ROW looking for deficiencies and animals. Today I seen multiple birds called the Savannah Sparrow. Their was approximately 30/40 of them eating what looked like to be pieces of the farmers crop that was blowing with the wind onto ROW. It made it a lot more visible for the birds to locate.

**Work Forecast:**

Monitoring the lines.

Monitor sensitive areas and go monitor a new crew starting up the Tackifier crew.

October 26, 2018

**Safety included:**

Slips, trips, falls, pay attention to the terrain you are walking on.

Wildlife be alert when driving.

Proper PPE on the job site.

Congested sites. Be aware of moving equipment. keep eye contact with operator at all times.

Driving pay attention to road conditions and signs.

Vehicles keep clean headlights brake lights windshield take garbage out after each shift.

Safety toolbox meeting with monitors at 6:30am.

All injuries, incidents, and occupational illnesses can be prevented.

All operating exposures can be controlled.

As a Senior Monitor I'm accountable for safety performance.

All employees are responsible for safety.

Safety is 24/7 and it benefits family, friends, co-workers and community.

Be aware of students and children in Brandon area and gravel roads as school is in season.

Dress in layers cold weather season here and drink plenty of water as dehydration can happen when cold out.

Muddy conditions and snow be aware of surroundings on foot and when driving.

Also high winds today be careful around crews for dust contamination/coating fumes/welders fumes and also when opening doors vehicles/office doors/bathroom doors.

**Weather forecast/Environment:**

60% chance of rain. Wind west at 20 km/h. High 14. UV index 2.

KP-835+200 Heritage site ID-TLU-61 no activity

Mainly cloudy with 60 percent chance of showers early in the morning. Clearing in the morning. Fog patches dissipating early in the morning. Wind becoming west 20 km/h early in the afternoon. High 14. UV index 2 or low.

Keep all areas of work clean and gravel roads traveled as well.

Minimize the number of environmental non-compliances.

Provides Environmental Due diligence.

Increase and strengthen the communication links between Contractors and Enbridge

Construction and Environmental staff regarding environmental considerations and mitigation.

Provide daily on the job awareness/education through assessment and communication of the environmental considerations and mitigation.

Wetlands : 1

- MB-1039 Semi-Permanent Marsh Class 4 Wetland Complex SSKP 821+800 Tie In welding in area.

Tie In crew welding in Native Prairie which starts at SSKP 821+500 to 852

**General:**

Tailgate meeting.

RD # 12 Observed the pig pen water gushing out the side of the filter bag.

RD # 1 Checked the generators for oil or gas leaks. Well contained. No concerns. Checked the right away for debris, cigarette butts. Clean and organized.

RD # 25 Walked the right away and reassess the heritage site. ID # TLU-61. Workers repairing the track for the ditch wheel at KP-835+200.

RD # 39 Walked the right away. Observing 3 workers doing the coating. Clean and tidy.

RD # 54 East side welders are in the welding shacks. Walked the right away checking for shavings, garbage and cigarette butts.

Our morning meeting was focused on driving as there is heavy fog outside and we need to be careful on highways and gravel roads.

SSKP 807+600 Premay has started stringing pipe between kick-off and Rd # 3.

SSKP 807+800 Tackifier crew was spraying tackifier on topsoil wind rows.

SSKP 821+800 Tie In crew welding in Native Prairie which starts at SSKP 821+500 to 852.

SSKP 822+100 Tie In Coating crew blasting and coating weld in bell hole.

SSKP 822+125 Tie In crew welding in wetlands MB-1039 Semi-Permanent Marsh Class 4 Wetland Complex

SSKP 881+000 Great job done on ROW. Smooth no ruts. Topsoil and seconds pile placed good. Pipe ready for coating.

Deficiencies

Rd # 14 road crossing needs to be paved

**Work Forecast:**

Monitor down the right always.

Continue to monitor sensitive areas and prepare work from Banister's daily objectives work schedule.

October 27, 2018

**Safety included:**

Communication let your supervisor know your where about and what you are doing at all times. Focused on job at hand.

Equipment keep good eye contact with the operator.

Lifting and handling lift with your knees not your back.

Safety toolbox meeting with monitors at 6:30am.

All injuries, incidents, and occupational illnesses can be prevented.

All operating exposures can be controlled.  
As a Senior Monitor I'm accountable for safety performance.  
All employees are responsible for safety.  
Safety is 24/7 and it benefits family, friends, co-workers and community.  
Be aware of students and children in Brandon area and gravel roads as school is in season.  
Dress in layers cold weather season here and drink plenty of water as dehydration can happen when cold out.  
Muddy conditions and snow be aware of surroundings on foot and when driving.  
Also high winds today be careful around crews for dust contamination/coating fumes/welders fumes and also when opening doors vehicles/office doors/bathroom doors.

**Weather forecast/Environment:**

30% rain. Wind 20 %. High 7. Uv index 4.  
MB-071 semi permanent wetland complex class 4 no activity.  
ID # MB-068 KP-846-600 Broadleaf treated swamp. Wetlands crossing class 3. KP-846-344 Broadleaf treated swamp Wetlands crossing class 3. ID # MB-067 no activity.  
Increasing cloudiness. 30 percent chance of showers late in the afternoon. Fog patches in the morning. Wind becoming northwest 20 km/h late in afternoon. High 7. UV index 1 or low.  
Keep all areas of work clean and gravel roads traveled as well.  
Minimize the number of environmental non-compliances.  
Provides Environmental Due diligence.  
Increase and strengthen the communication links between Contractors and Enbridge Construction and Environmental staff regarding environmental considerations and mitigation.  
Provide daily on the job awareness/education through assessment and communication of the environmental considerations and mitigation.

Wetlands : 6

-MB-113 seasonal Marsh Class 3 SSKP 887+650  
-MB-114 Ephemeral/Temporary Marsh 1 & 2 SSKP 888+360  
-MB-118 Ephemeral/Temporary Marsh Class 1 & 2 SSKP 891+660  
-MB-119 Ephemeral/Temporary Marsh Class 1 & 2 SSKP 891+670  
-MB-120 Ephemeral/Temporary Marsh Class 1 & 2 SSKP 891+790  
-MB-121 Seasonal Marsh Class 3 Wetland Complex SSKP 891+830

Watercourse : 1 SSKP 907+833 Souris River HDD section. Side booms crossing road on ROW setting up for bore tomorrow Sunday October 28th.

**General:**

SF # 28 Walked the SF. No concerns. Semi permanent wetlands complex class 4.  
SF # 28 Reassess the aqua dam. Muskrats built 2 new push-ups. No concerns. KP 848+400  
SF # 28 Walked to the wetlands crossing. ID # MB-068. KP-846+600. Broadleaf treated swamp.  
Our morning meeting we discussed about more fog in morning forecast as visibility is poor.  
SSKP 888+000 Dozer back blading ROW smoothing it out doing a great job, also working through wetlands MB-113 seasonal Marsh Class 3 SSKP 887+650 and MB-114 Ephemeral/Temporary Marsh 1 & 2 SSKP 888+360.  
SSKP 891+500 Pipe Gang welding through wetlands in the fog this morning. MB-118 Ephemeral/Temporary Marsh Class 1 & 2 SSKP 891+660, MB-119 Ephemeral/Temporary Marsh Class 1 & 2 SSKP 891+670, MB-120 Ephemeral/Temporary Marsh Class 1 & 2 SSKP 891+790 and MB-121 Seasonal Marsh Class 3 Wetland Complex SSKP 891+830.  
SSKP 907+833 Souris River HDD section. Side booms crossing road on ROW setting up for bore tomorrow Sunday October 28th. Also 3 cranes on site that will be used to help get the height required for the angle of the steep bore.  
SSKP 838+700 Access crew building ramp across ROW to haul sand from borrow pit from landowners property. Also in same area they are rolling back fences and tramping cattails ( Bulrushes ) through the lagoon between Rd # 27 & # 28.

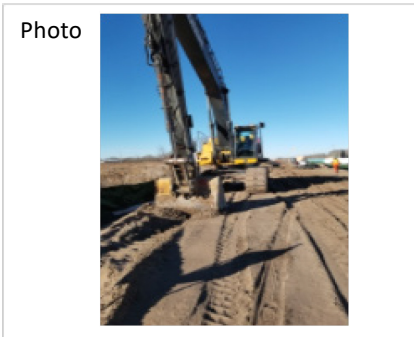
**Work Forecast:**

Monitoring the lines.

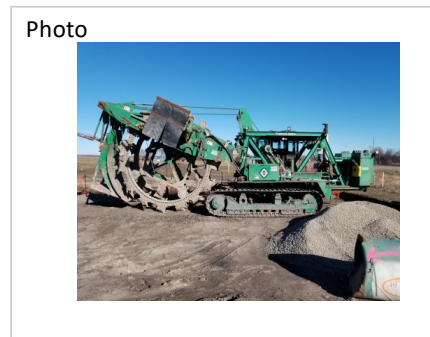
Drive safe day off tomorrow. Monitor sensitive areas Monday and see how the Souris River HDD bore went on Sunday.

**Photos of Sites Visited & Topics Discussed This Week**

October 22, 2018



Descriptions & Location KP- 820+100  
Photo taken facing west  
MB-1039-5 Semi marsh complex class 4  
Checked for oil or spills. No concerns



Description & Location KP-830+900  
Photo taken facing west  
Monitored ditch witch for oil or gas leaks



Description & Location: SSKP 853+900  
Coating Mainline  
Sandblasting weld  
Preparing it for coating applicators  
Facing southeast



Description & Location: SSKP 879+750  
Set-up crew to the left  
End Prep and Pipegang in background  
Pipe getting ready to be welded  
Facing west



Description & Location: SSKP 890+800  
Grade Crew  
Moving equipment ahead to next objective  
Getting lots of production done  
Photo facing northwest



Description & Location: SSKP 877+500  
Pipe Gang and Poor Boy  
Equipment needed to be cleaned  
Pipegang working through wetlands  
Photo facing east



October 23, 2018

OCTOBER 24, 2018



Dozers back filling behind the side  
Description & Location KP-822+125.6  
booms.

Photo taken facing south  
Workers going to start welding the tie-ins



Excavator being washed at the station  
Description & Location KP- 830+923

Photo taken facing east  
Excavator trenching the open ditch



Description & Location: SSKP 902+530

Watercourse Drainage  
Dozer touching up ROW  
Wetlands ramp in good condition  
Photo northeast



Description & Location: SSKP 903+090

Grade crew stripping and pushing topsoil  
Workers building wetlands ramp  
Watercourse Drainage  
Facing east



Description & Location: SSKP 880+855

Pipe Gang Welders  
Rotoscan to the left  
Welders going through wetlands  
Photo facing northeast



Description & Location: SSKP 895+700

Stringing Crew  
Stringing through Heritage sensitive  
area  
Stringing has been very productive



Description & Location: SSKP 821+065

Tie In crew  
Excavator digging bell hole  
Getting prepped to weld tie in  
Side Boom supporting pipe in sling  
Facing West



Description & Location: SSKP 818+400

Tie In crew  
Welding pipe in bell hole  
Extra Side Booms used to support pipe  
The L3R pipe was under hotline safely  
Facing east



Description & Location: SSKP 843+200

Buffer Mulch crew  
Spraying buffer zone in picture  
Helps protect topsoil  
Facing northwest



Description & Location: SSKP 885+700

Pipe Gang  
Welding through Wetlands & Heritage  
Welding is making good production  
Facing northeast

OCTOBER 25, 2018



Description & Location KP-829+300

Photo taken facing south.  
Wetlands crossing ID # MB-040  
seasonal marsh complex.



Description & Location KP-841+300

Photo taken facing west.  
Wetlands complex marsh. MB-054



Description & Location: SSKP 833+125

Trenching, Lower In and Backfill crews  
All working together safely  
Crews are very productive  
Facing northwest



Description & Location: SSKP 833+900

Fallen tree on ROW from high winds  
Tree landed on topsoil and work sign  
No one hurt notified safety with  
Enbridge



Description & Location: SSKP 863+400

Coating Mainline  
Approaching archeological site  
Coating almost 3 km's a day  
Facing west



Description & Location: SSKP 873+920

Savannah Sparrow on skid under pipe  
30 to 40 eating farmers crop  
The farmer was cutting crop  
Crop pieces blew on ROW

OCTOBER 26, 2018

Photo



Description & Location KP-808+568.2

Photo taken facing east.  
Generators are well contained.

Photo



Description & Location KP-835+200

Phot taken facing west.  
Workers repairing the track on the ditch wheel.



Description & Location: SSKP 807+800

Tackifier crew  
Spraying tackifier on topsoil piles  
Prevents soil from blowing away  
Facing south



Description & Location: SSKP 807+800

Tie In crew welding pipe in trench  
Tie In coating crew blasting pipe  
Working in Native Prairie  
Facing northwest



Description & Location: SSKP 822+100

Tie In Coating crew  
Starting application of epoxy coating  
Spill tray under pipe  
Facing west



Description & Location: SSKP 881+000

ROW condition excellent  
No ruts smooth for driving  
Pipe ready to be coated  
Facing east

OCTOBER 27, 2018



Description & Location KP-848+400

Photo taken facing east.  
Reassess the aqua dame. No activity



Photo taken facing east.

Photo taken facing east.  
Reassess the wetlands. No concerns.



Description & Location: SSKP 888+000

Dozer back blading ROW  
From picture it looks smooth on ROW  
Operator doing a great job  
Facing east



Description & Location: SSKP 891+500

Pipe Gang welding through wetlands  
Fog was in the air till afternoon  
Congested but doing great with safeness  
Facing northeast



Description & Location: SSKP 907+833

Side Boom crossing under powerline  
Flagging to the right controlling traffic  
Crossed 4 Side Booms for HDD set up  
Facing south



Description & Location: SSKP 838+700

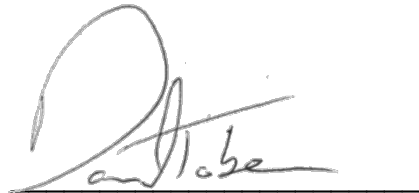
Access Crew  
Setting up ramp across our ROW  
They will haul sand from borrow pit  
Facing north

**APPROVALS**



\_\_\_\_\_  
Lee Bear  
Senior Construction Monitor

\_\_\_\_\_  
January 14, 2019  
Date



\_\_\_\_\_  
Daniel Tober  
Senior Environmental Scientist

\_\_\_\_\_  
January 14, 2019  
Date